

# ASAHI

*PTCA Guide Wire*

ASAHI's unique guide wire technology with Composite Core

**SION TECC**   
Leading to the NEXT

# ASAHI

## PTCA Guide Wire

### The Right Wire for Any Case

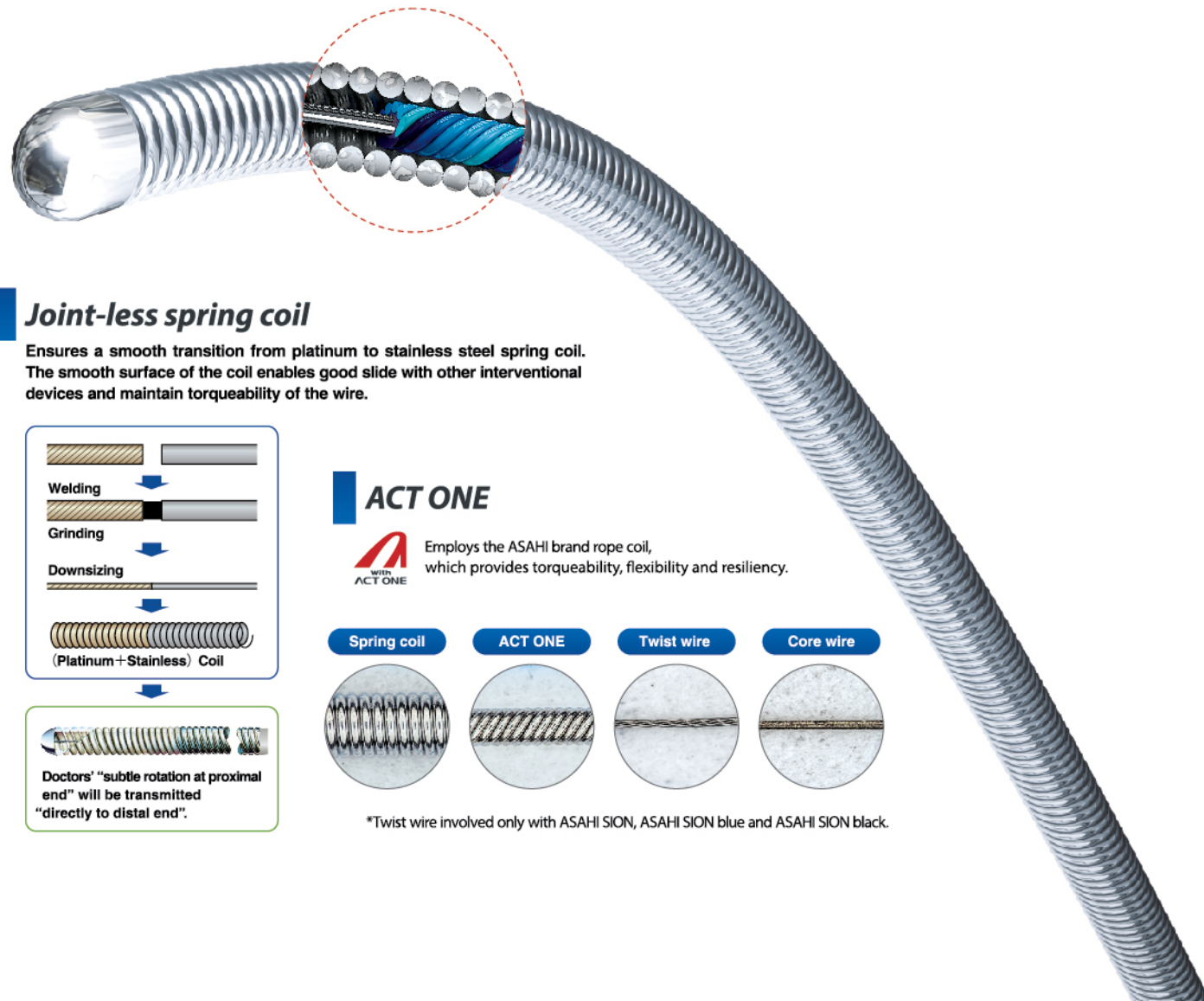
The reliability of the products is highly recognized by its users in the medical profession.

SION TECC

ASAHI's unique guide wire technology with Composite Core

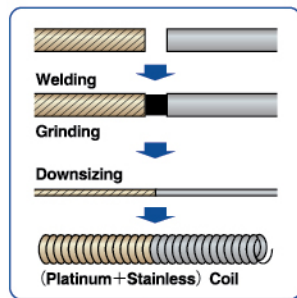


- Enhanced tip durability
- Combination of flexibility and torque force
- Reduced whipping of the wire due to superior torque response



#### Joint-less spring coil

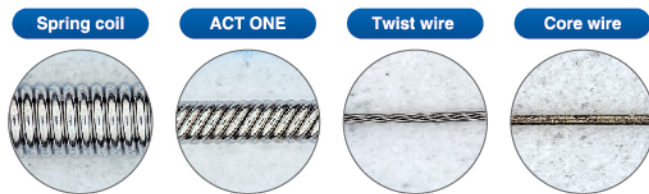
Ensures a smooth transition from platinum to stainless steel spring coil. The smooth surface of the coil enables good slide with other interventional devices and maintain torqueability of the wire.



Doctors' "subtle rotation at proximal end" will be transmitted "directly to distal end".

#### ACT ONE

Employs the ASAHI brand rope coil, which provides torqueability, flexibility and resiliency.



\*Twist wire involved only with ASAHI SION, ASAHI SION blue and ASAHI SION black.

#### Tip design

A variety of tip designs to facilitate branch selection or penetration ability. Asahi offers the right wire for any lesion.

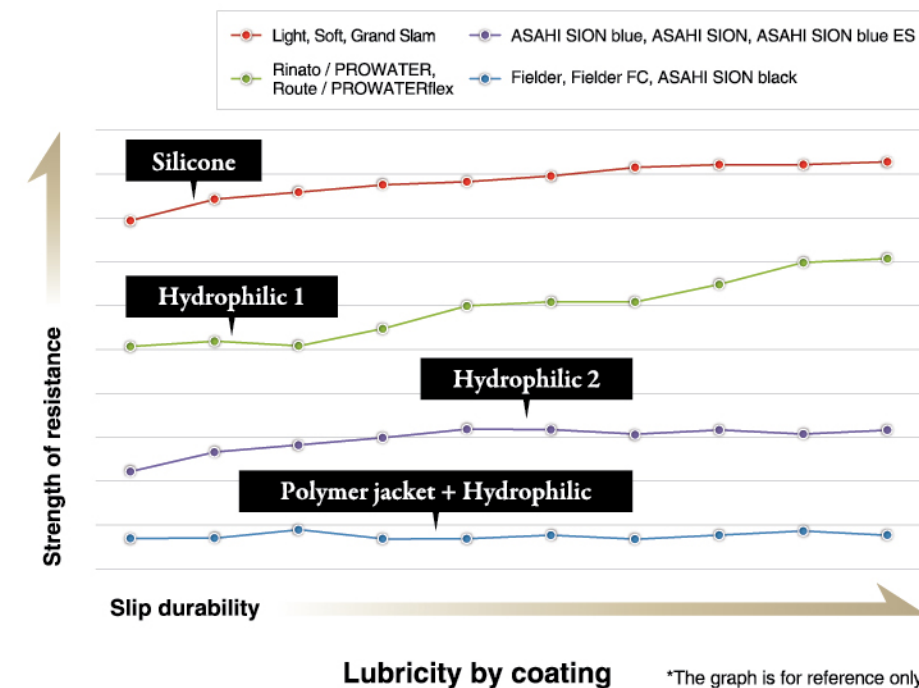


#### One-piece core wire

One-piece core wire supports the entire guide wire from the proximal to the distal end. This design transmits the guide wire torque from one end to the other without loss.

#### Coatings

A variety of coatings provide either superior lubricity, tactile feedback, or an optimal combination of the two.



\*The graph is for reference only.



## Frontline guide wires with SION TECC



### ASAHI SION blue



- Tip load ..... 0.5 gf
- Tip radiopacity ..... 3 cm
- SLIP-COAT® coating over the spring coil\*

First choice guide wire with proprietary Composite Core construction for greater tip flexibility and support performance. Easily-discernible shaft color for differentiation from other ASAHI wires. \*Silicone coating up to 15mm from the tip for safer procedures.

### ASAHI SION



- Tip load ..... 0.7 gf
- Tip radiopacity ..... 3 cm
- SLIP-COAT® coating over the spring coil

First choice guide wire with proprietary Composite Core construction for excellent tip durability and torque performance in tight anatomy. Flexible shaft and atraumatic tip for stress-free operation.

### ASAHI SION black



- Tip load ..... 0.8 gf
- Tip radiopacity ..... 3 cm
- Polymer jacket length ..... 20 cm
- SLIP-COAT® coating ..... 40 cm

Frontline guide wire with a polymer jacket designed to retain flexibility while crossing high resistance stenosis and vessels.

### ASAHI SION blue ES



- Tip load ..... 0.5 gf
- Tip radiopacity ..... 3 cm
- SLIP-COAT® coating ..... 40 cm\*

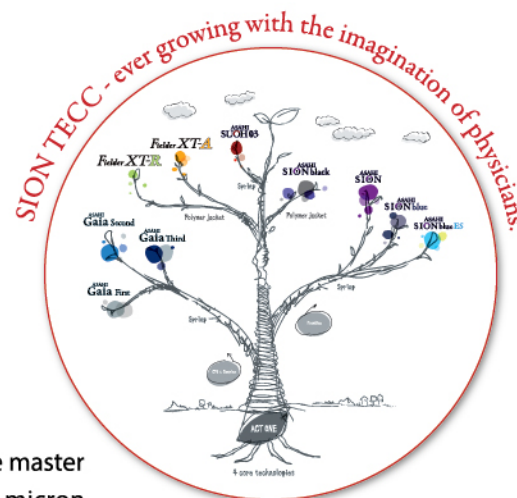
An extra support type wire with SION TECC. A wire that stabilizes the guide catheter for stress-free device delivery. \*Silicone coating up to 2.5mm from the tip for safer procedures.

ASAHI's unique guide wire technology with Composite Core



## “Small changes, great possibilities”

SION TECC is at the forefront of innovation. Listening to the needs of physicians and drawing on the skills of Japanese master craftsmen, we created ACT ONE : an ingenious enhancement of the 10 micron core wire that forms part of our guide wires' unique Composite Core design. Technology that pushes back the boundaries of guide wire manipulation, enabling movement just as you imagine it.



## Complex and Chronic occlusion guide wires with SION TECC

### ASAHI SUOH 03



- Tip load ..... 0.3 gf
- Tip radiopacity ..... 3 cm
- SLIP-COAT® coating ..... 52 cm

Flexible shaft provides superb trackability and crossability in severe tortuosity. The long radiopaque segment provides good visualization.

### Fielder XT-R



- Tip load ..... 0.6 gf
- Tip radiopacity ..... 16 cm
- Polymer jacket length ..... 17 cm
- Tip outer diameter ..... 0.26 mm (0.010 inch)
- SLIP-COAT® coating over the polymer jacket

Guide wire recommended for narrow channel tracking with its low profile, flexible tip, and high lubricity polymer coating.

### Fielder XT-A



- Tip load ..... 1.0 gf
- Tip radiopacity ..... 16 cm
- Polymer jacket length ..... 17 cm
- Tip outer diameter ..... 0.26 mm (0.010 inch)
- SLIP-COAT® coating over the polymer jacket

Guide wire with a higher tip load than Fielder XT and XT-R, facilitating entry into the chronic occluded lesion.

### ASAHI Gaia series (First, Second, Third)



- Tip load
  - ASAHI Gaia First ..... 1.7 gf
  - ASAHI Gaia Second ..... 3.5 gf
  - ASAHI Gaia Third ..... 4.5 gf
- Tip radiopacity ..... 15 cm
- Tip outer diameter
  - ASAHI Gaia First ..... 0.26 mm (0.010 inch)
  - ASAHI Gaia Second ..... 0.28 mm (0.011 inch)
  - ASAHI Gaia Third ..... 0.30 mm (0.012 inch)
- SLIP-COAT® coating ..... 40 cm

Guide wire with a high maneuverability in the chronic total occluded lesion, and a tip designed to improve penetrability into the lesion while remaining flexible.



## Frontline guide wires

### Rinato / PROWATER



- Tip load ..... 0.8 gf
- Tip radiopacity ..... 3 cm
- SLIP-COAT® coating over the spring coil\*

First choice guide wire with floppy tip and moderate core wire support. Excellent maneuverability and good support for device delivery.  
\*Silicone coating up to 30mm from the tip for safer procedures.

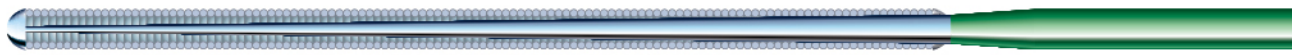
### Route / PROWATERflex



- Tip load ..... 0.8 gf
- Tip radiopacity ..... 3 cm
- SLIP-COAT® coating over the spring coil\*

First choice guide wire featuring a soft tip with good shaping memory and excellent guide wire trackability. Sufficient support for delivery of most interventional devices.  
\*Silicone coating up to 30mm from the tip for safer procedures.

### Soft



- Tip load ..... 0.7 gf
- Tip radiopacity ..... 3 cm
- Silicone coating over the spring coil

Basic frontline guide wire with floppy tip and non hydrophilic coating to ensure optimal tactile feedback.

### Light



- Tip load ..... 0.5 gf
- Tip radiopacity ..... 3 cm
- Silicone coating over the spring coil

Basic frontline guide wire with a flexible core and good torqueability for distal side branch selection.

### Fielder



- Tip load ..... 1.0 gf
- Tip radiopacity ..... 3 cm
- Polymer jacket length ..... 22 cm
- SLIP-COAT® coating over the polymer jacket

A polymer jacket guide wire, providing advanced slip performance and trackability.

### Fielder FC



- Tip load ..... 0.8 gf
- Tip radiopacity ..... 3 cm
- Polymer jacket length ..... 20 cm
- SLIP-COAT® coating over the polymer jacket

Fine control over challenging tortuous vessels and highly stenosed lesions. Polymer jacket provides advanced slip performance with superior torque and support.

## Others

### Grand Slam



- Tip load ..... 0.7 gf
- Tip radiopacity ..... 4 cm
- Silicone coating over the spring coil

Stiff wire shaft provides extra support for delivery of interventional devices in extreme cases.

## Complex and Chronic occlusion guide wires

### Fielder XT



- Tip load ..... 0.8 gf
- Tip radiopacity ..... 16 cm
- Polymer jacket length ..... 16 cm
- Tip outer diameter ..... 0.23 mm (0.009 inch)
- SLIP-COAT® coating over the polymer jacket

Polymer jacket, providing excellent lubricity and trackability in tortuous vessels. The tapered tip provides extreme precision for the treatment of complex lesions such as sub-total occlusions and long diffused lesions.

### Intermediate / MEDIUM



- Tip load ..... 3.0 gf
- Tip radiopacity ..... 3 cm
- Silicone coating over the spring coil

First choice wire for chronic occlusion cases.

### ULTIMATEbros 3



- Tip load ..... 3.0 gf
- Tip radiopacity ..... 11 cm
- SLIP-COAT® coating over the spring coil until the middle of the shaft / without tip

Long hydrophilic coating maintains high maneuverability, allowing for improved wire manipulation in heavy stenosed lesions. Fine shaping improves vessel selectivity and reduces the risk of false lumen expansion.

### ASAHI Miracle series / ASAHI MIRACLEbros series

3 / 4.5 / 6 / 12



- Tip load .... 3.0 / 4.5 / 6.0 / 12.0 gf
- Tip radiopacity ..... 11 cm
- Silicone coating over the spring coil

Guide wire with good tactile feedback which maintains torqueability through the occlusion.

### ASAHI Conquest / ASAHI Confianza

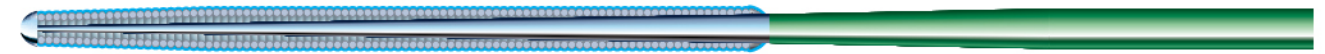


- Tip load ..... 9.0 gf
- Tip radiopacity ..... 20 cm
- Silicone coating over the spring coil

Silicone coated and tapered to 0.23mm (0.009 inch) at the tip. The 9gf stiff, tapered tip helps to penetrate highly stenosed lesions.

### ASAHI Conquest Pro series / ASAHI Confianza Pro series

9 / 12 / 8-20



- Tip load ..... 9.0 / 12.0 / 20.0 gf
- Tip radiopacity ..... 20 cm (8-20 17 cm)
- SLIP-COAT® coating over the spring coil, excluding the tip
- Tip outer diameter  
ASAHI Conquest Pro, Pro12 ..... 0.23 mm (0.009 inch)  
ASAHI Conquest Pro 8-20 ..... 0.20 mm (0.008 inch)

Tapered guide wire for crossing complex lesion with heavy calcification or tough fibrous tissues.

## Externalization guide wire

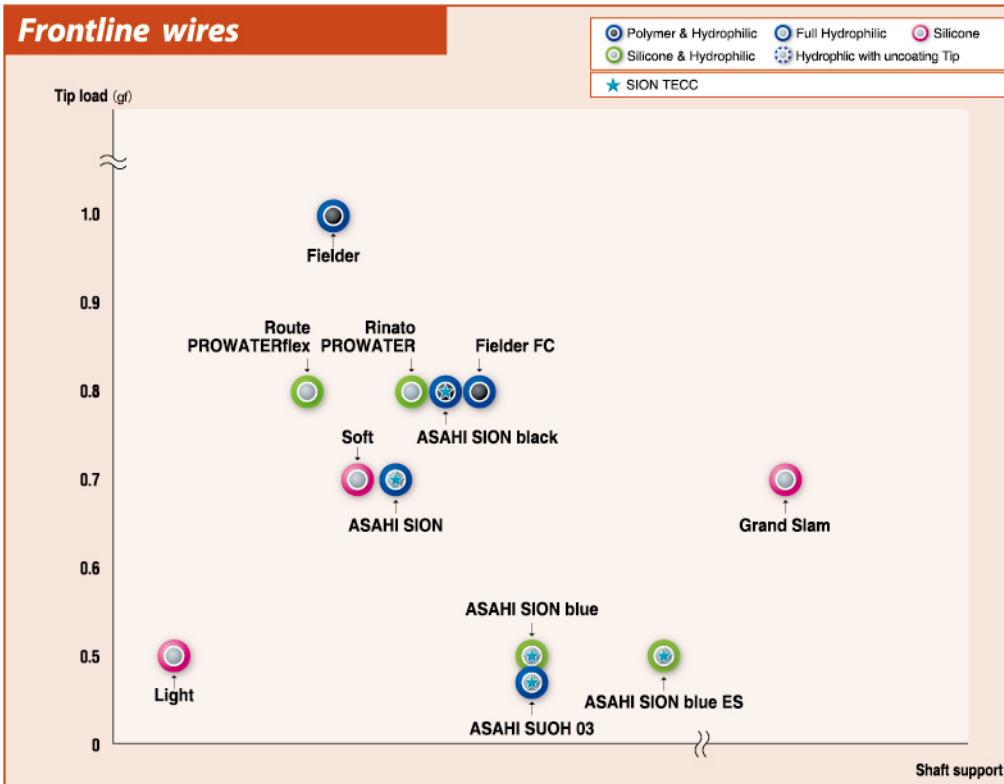
### ASAHI RG3



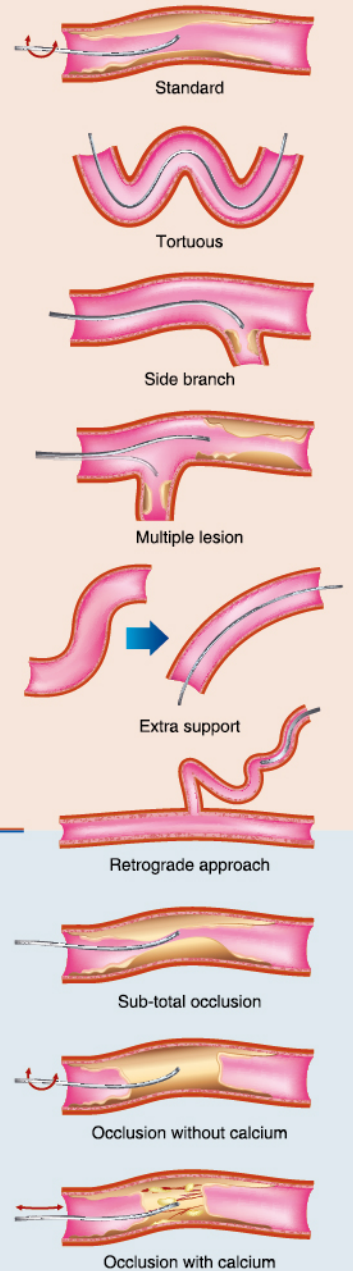
- Tip load ..... 3.0 gf
- Tip radiopacity ..... 3 cm
- SLIP-COAT® coating over the spring coil and until the middle of the shaft
- Shaft diameter ..... 0.26 mm (0.010 inch)
- Guide wire length ..... 330 cm

For guide wire externalization only. Optimal wire strength, hydrophilic coating and 0.26 mm (0.010 inch) shaft provide superior inside-catheter pushability. With the inner wall damage possibility reduced in tortuous vessels as well, the risk of complication is minimized.

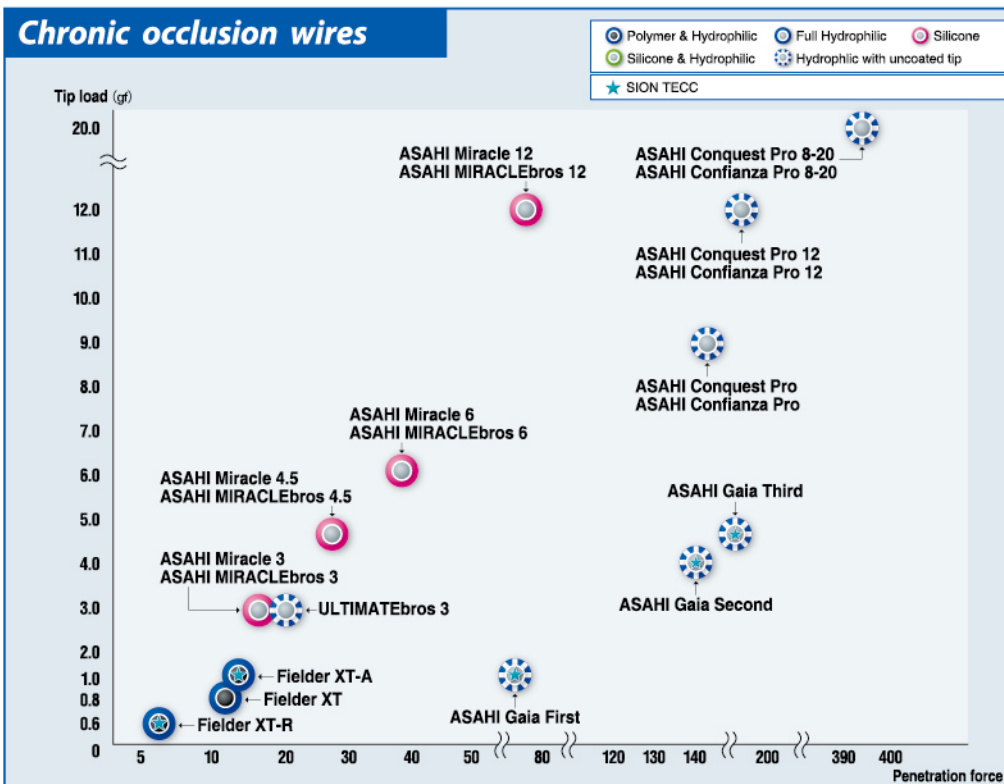
## Frontline wires



\*ASAHI SUOH 03 is recommended to use mainly for the retrograde wiring.



## Chronic occlusion wires



- Polymer & Hydrophilic**  
Enhanced lubricity for better crossability of severe stenoses.
- Silicone & Hydrophilic**  
Combine advantages of both. Silicone coating over the last few centimeters distally, hydrophilic coating over the rest of the coil and shaft.
- Full Hydrophilic**
- Hydrophilic with uncoated tip**  
Enhance lubricity for easier wire manipulation in lesions.
- Silicone**  
Prevent slippage to gain tactile response for lesion morphology.
- SION TECC**



# Ordering information

## SION TECC series

Product	Catalog No.	Diameter (mm (inch))	Radiopaque segment (cm)	Spring coil length (cm)	Length (cm)	Tip shape
ASAHI SION blue	AHW14R004S	0.36 (0.014)	3	20	180	Straight
	AHW14R304S				300	Straight
	AHW14R004J				180	J
	AHW14R304J				300	J
ASAHI SION	AHW14R001S	0.36 (0.014)	3	28	180	Straight
	AHW14R301S				300	Straight
	AHW14R001J				180	J
	AHW14R301J				300	J
ASAHI SION black	APW14R010S	0.36 (0.014)	3	12	190	Straight
	APW14R310S				300	Straight
	APW14R010J				190	J
	APW14R310J				300	J
ASAHI SION blue ES	AHW14R017S	0.36 (0.014)	3	8.5	190	Straight
	AHW14R317S				300	Straight
	AHW14R017J				190	J
	AHW14R317J				300	J
Fielder XT-A	APW14R009S	0.26 / 0.36	16	16	190	Straight
	APW14R309S	(0.010 / 0.014)			300	Straight
Fielder XT-R	APW14R005S	0.26 / 0.36	16	16	190	Straight
	APW14R305S	(0.010 / 0.014)			300	Straight
ASAHI Gaia First	AHW14R007P	0.26 / 0.36	15	15	190	Pre-shape
	AHW14R307P	(0.010 / 0.014)			300	Pre-shape
ASAHI Gaia Second	AHW14R008P	0.28 / 0.36	15	15	190	Pre-shape
	AHW14R308P	(0.011 / 0.014)			300	Pre-shape
ASAHI Gaia Third	AHW14R011P	0.30 / 0.36	15	15	190	Pre-shape
	AHW14R311P	(0.012 / 0.014)			300	Pre-shape
ASAHI SUOH 03	AHW14R013P	0.36 (0.014)	3	19	190	Pre-shape
	AHW14R313P				300	Pre-shape
	AHW14R013S				190	Straight
	AHW14R313S				300	Straight

## Traditional wires

Product	Catalog No.	Diameter (mm (inch))	Radiopaque segment (cm)	Spring coil length (cm)	Length (cm)	Tip shape
Route / PROWATERflex	AGH147000	0.36 (0.014)	3	20	180	Straight
	AGH146000				180	Straight
Rinato / PROWATER	AGH146300	0.36 (0.014)	3	20	300	Straight
	AGH146000J				180	J
	AG141000				180	Straight
Soft	AG141300	0.36 (0.014)	3	30	300	Straight
	AG141000J				180	J
	AG145000				180	Straight
Light	AG145300	0.36 (0.014)	3	20	300	Straight
	AG145000J				180	J
	AGP140000				180	Straight
Fielder	AGP140001	0.36 (0.014)	3	12	180	Straight
Fielder FC	AGP140301	0.36 (0.014)	3	11	180	Straight
	AGP140301				300	Straight
Fielder XT	AGP140002	0.23 / 0.36	16	16	190	Straight
	AGP140302	(0.009 / 0.014)			300	Straight
	AG142000	180			Straight	
Intermediate / MEDIUM	AG142300	0.36 (0.014)	3	30	300	Straight
	AG142000J				180	J
	AG14M050				180	Straight
ASAHI Miracle 3 / ASAHI MIRACLEbros 3	AG14M045	0.36 (0.014)	11	11	180	Straight
ASAHI Miracle 4.5 / ASAHI MIRACLEbros 4.5	AG14M060	0.36 (0.014)	11	11	180	Straight
ASAHI Miracle 6 / ASAHI MIRACLEbros 6	AG14M070	0.36 (0.014)	11	11	180	Straight
ASAHI Miracle 12 / ASAHI MIRACLEbros 12	AHW14S003S	0.36 (0.014)	11	11	180	Straight
ASAHI Conquest / ASAHI Confianza	AG143090	0.23 / 0.36 (0.009 / 0.014)	20	20	180	Straight
ASAHI Conquest Pro / ASAHI Confianza Pro	AGH143090	0.23 / 0.36 (0.009 / 0.014)	20	20	180	Straight
ASAHI Conquest Pro 12 / ASAHI Confianza Pro 12	AGH143091	0.23 / 0.36 (0.009 / 0.014)	20	20	180	Straight
*ASAHI Conquest Pro 8-20 / ASAHI Confianza Pro 8-20	AGH143092	0.20 / 0.36 (0.008 / 0.014)	17	17	180	Straight
Grand Slam	AG141002	0.36 (0.014)	4	4	180	Straight
	AG141302				300	Straight
	AG141002J				180	J
ASAHI RG3	AHW10S302S	0.26 (0.010)	3	8	330	Straight
ASAHI EXTENSION 150cm	AG149000	0.36 (0.014)	—	—	150	—
ASAHI EXTENSION 165cm	AG149001	0.36 (0.014)	—	—	165	—



\*ASAHI Conquest Pro 8-20 / ASAHI Confianza Pro 8-20 is not CE approved.

Not all products and shapes are available in all markets. Please check availability with your sales representative.  
Coated with SLIP-COAT™ coating.

© 2017 ASAHI INTECC CO., LTD.  
\*ASAHI\*, \*ACT ONE\*, \*ASAHI SION\*, \*ASAHI Gaia\*, \*Fielder\*, and \*SUOH\* are trademarks or registered trademarks of ASAHI INTECC CO., LTD. in Japan and other countries.

Manufactured by:

Distributed by:



**ASAHI INTECC CO.,LTD.**

3-100 Akatsuki-cho, Seto, Aichi 489-0071 Japan  
TEL:+81-561-48-5551 FAX:+81-561-48-5552

<http://www.asahi-intecc.com>