



translumina
LIMITLESS POSSIBILITIES

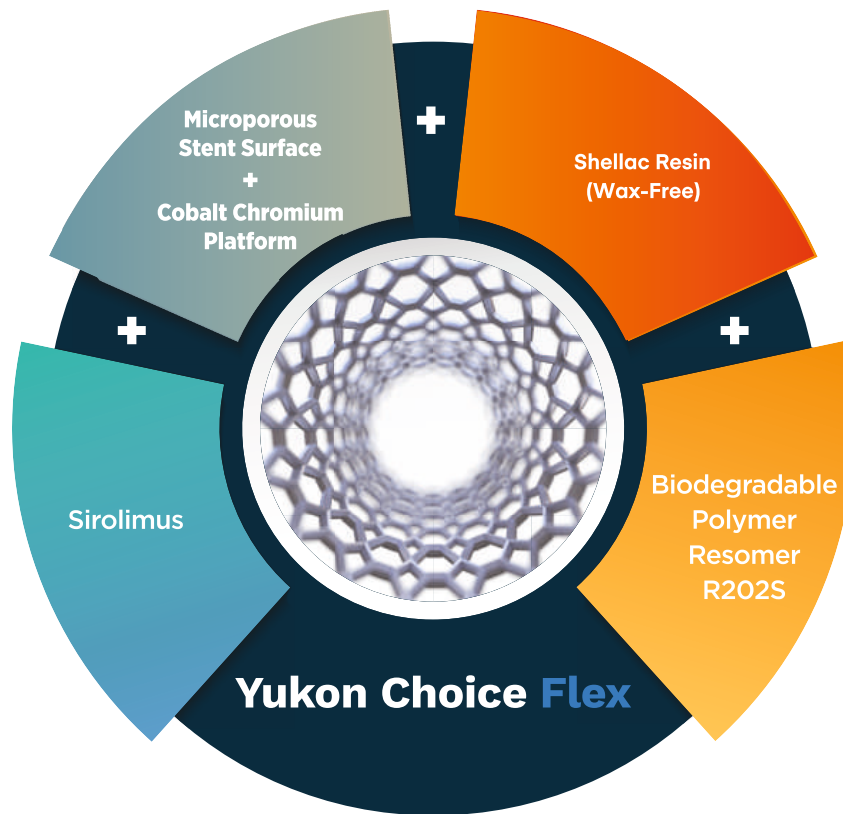
Yukon Choice **Flex**

Sirolimus Eluting Coronary Stent System



Finding ways to the true joys of life.

Next generation DES providing synergy of biodegradable polymer with microporous surface to enhance optimal performance



Less Polymeric Load Compared To Other DES

- One million pores per cm^2 with average depth of 2 μm ensures optimum drug release with minimal use of polymer
- Shellac Resin ensures better polymer-drug binding with negligible polymer flaking during stent expansion
- 80% of drug is released in 28 days *

Better Endothelialisation & Superior Strut Coverage

- Drug polymer matrix coated only on the abluminal side using patented stent coating technology for drug release only to target tissue
- No polymer on the luminal side ensures healthy endothelialisation and reduces the incidence of stent thrombosis

Yukon Choice Flex

Sirolimus Eluting Coronary Stent System

Advanced platform for redefining flexibility
in tortuous anatomy

Ideal Flexible Approach

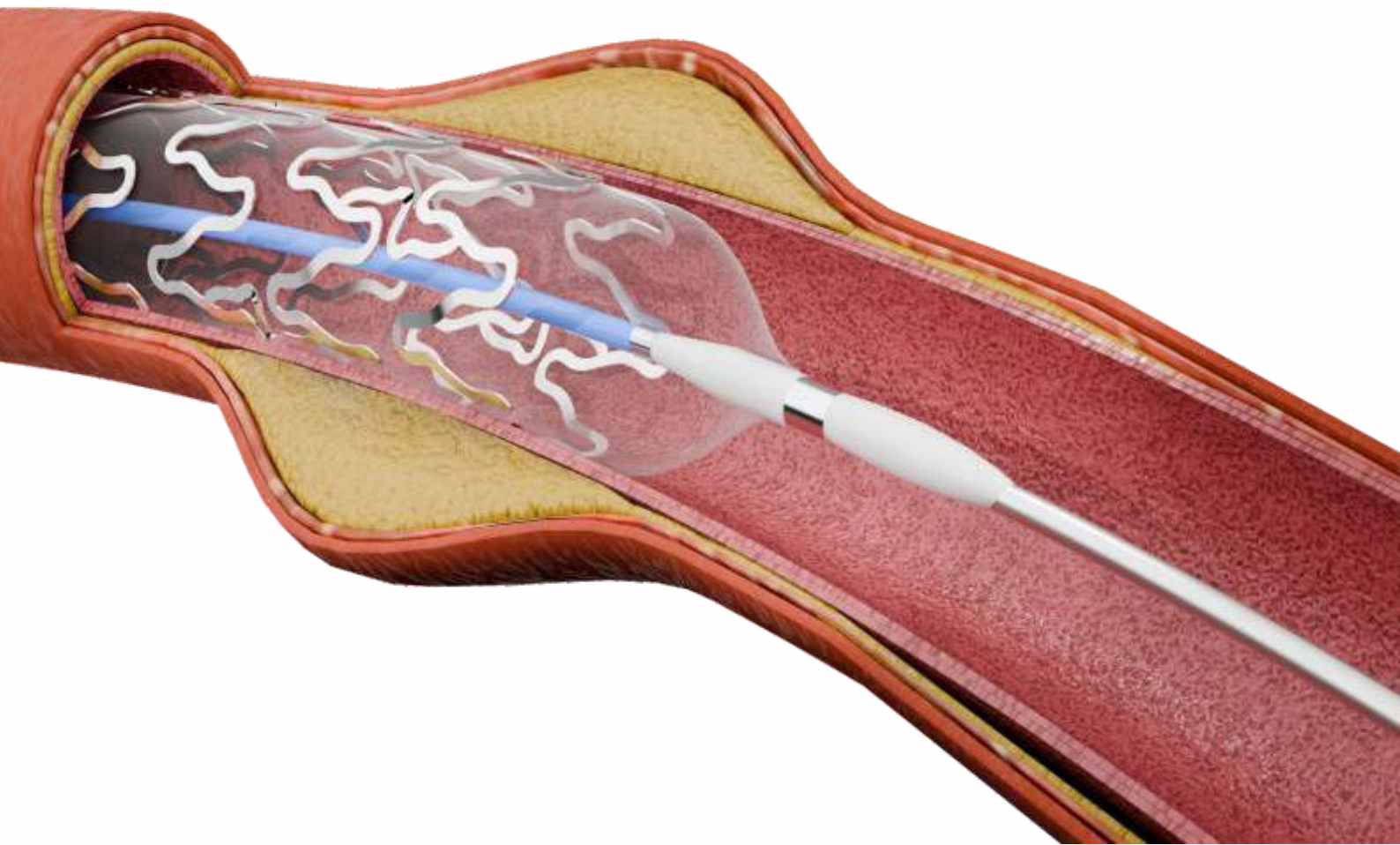
Yukon Choice Flex offers new generation delivery system with Flexi platform providing unmatched delivery in most tortuous vessels.

Enhanced Delivery System

The customized 2-Connector stent design of Yukon Choice Flex with thinner structural elements confirms for optimal deliverability.

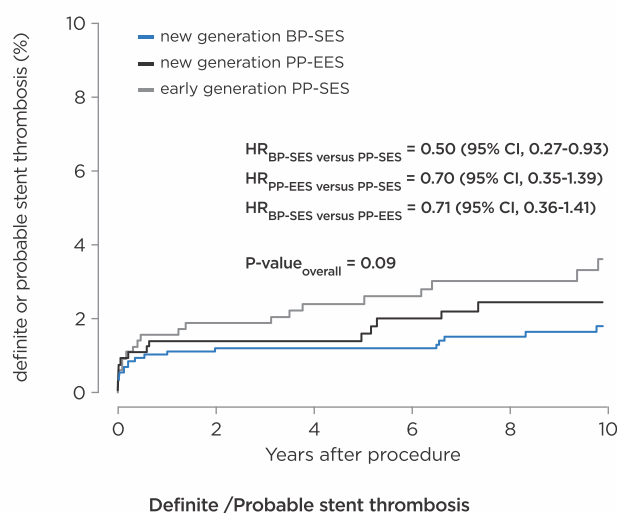
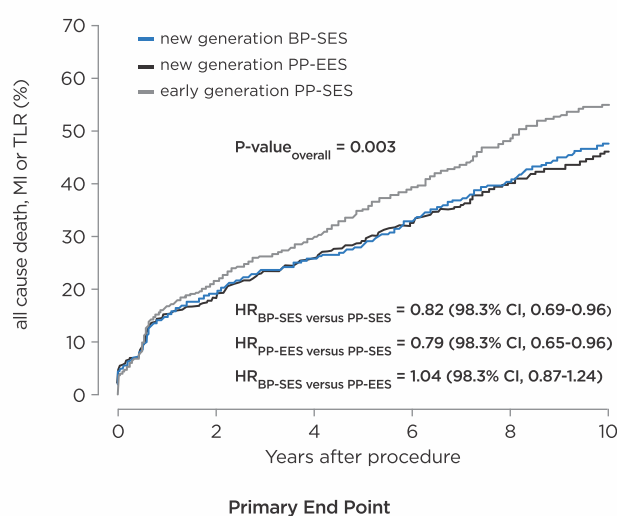
Proprietary Hypotube

The new shaft design offers optimal force transfer with excellent push-ability and kink resistance allowing high manoeuvrability, justifying its use for the most tortuous vessels.



10 YEARS CLINICAL DATA OF EFFICACY & SAFETY

In this unique long term analysis at 10 years, Yukon has shown the lowest rate of Definite/ Probable Stent Thrombosis with a significant risk reduction than Cypher (50%) and numerically lower TLR rates as compared to Xience (29%) while maintaining the similar efficacy.



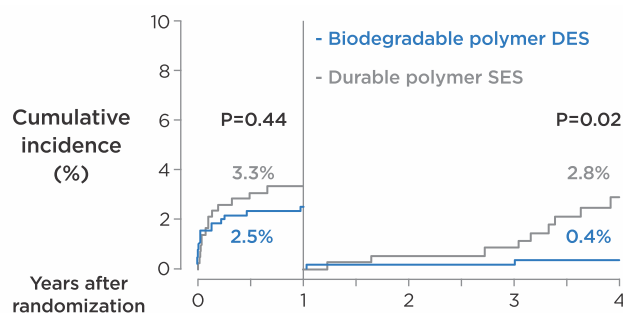
Comparison of clinical outcomes at 10 years in patients treated with new-generation BP-SES versus new-generation PP-EES versus early generation SES.

Unmatched Safety- In Complex Patients Subset

Long-term outcomes of biodegradable polymer versus durable polymer drug-eluting stents in **patients with diabetes**: a pooled analysis of individual patient data from 3 randomised trials



At 4 years, Biodegradable Polymer DES Yukon showed significantly lower rates of Stent Thrombosis compared to Durable Polymer SES in patients with Diabetes Mellitus.

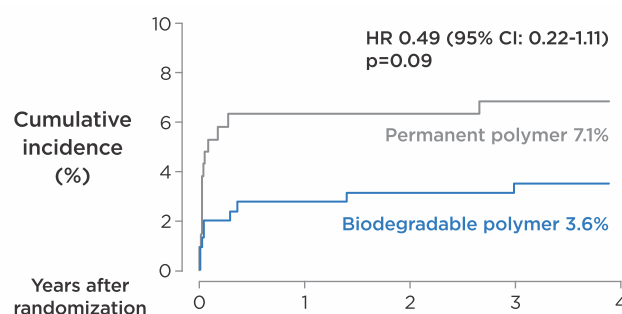


Secondary safety end point: definite or probable stent thrombosis

Long-term outcomes of biodegradable versus durable polymer drug-eluting stents in **patients with acute ST-segment elevation myocardial infarction**: a pooled analysis of individual patient data from three randomised trials

EuroIntervention

At 4 years, Biodegradable Polymer DES compared to Durable Polymer SES demonstrated improved overall clinical outcome, reduced need for revascularisation as well as lower incidence of cardiac death or MI and reduced stent thrombosis in patients with STEMI.



Definite or probable stent thrombosis for the pooled population in each of the treatment groups.
CI: confidence interval; HR: hazard ratio

Yukon Choice Flex

Sirolimus Eluting Coronary Stent System

PRODUCT MATRIX / ORDERING INFORMATION*

Stent Diameter Ø [mm]	Stent length [mm] & Article number							
	8	12	16	18	21	24	28	32
Ø 2.00	YCFX2008	YCFX2012	YCFX2016	YCFX2018	YCFX2021	YCFX2024	YCFX2028	YCFX2032
Ø 2.50	YCFX2508	YCFX2512	YCFX2516	YCFX2518	YCFX2521	YCFX2524	YCFX2528	YCFX2532

Stent Diameter Ø [mm]	Stent length [mm] & Article number								
	8	12	16	18	21	24	28	32	40
Ø 2.75	YCFX2708	YCFX2712	YCFX2716	YCFX2718	YCFX2721	YCFX2724	YCFX2728	YCFX2732	YCFX2740
Ø 3.00	YCFX3008	YCFX3012	YCFX3016	YCFX3018	YCFX3021	YCFX3024	YCFX3028	YCFX3032	YCFX3040
Ø 3.50	YCFX3508	YCFX3512	YCFX3516	YCFX3518	YCFX3521	YCFX3524	YCFX3528	YCFX3532	YCFX3540
Ø 4.00	YCFX4008	YCFX4012	YCFX4016	YCFX4018	YCFX4021	YCFX4024	YCFX4028	YCFX4032	YCFX4040

* Please contact our Customer Care for available sizes

COMPLIANCE CHART

Balloon Diameter Ø [mm]	inflation Pressure (atm/bar/10 ⁵ Pa)																
						NP (Nominal Pressure)						RBP (Rated Burst Pressure)					
	6	7	8	9	10		11	12	13	14	15		16	17	18	19	20
Ø 2.00	1.83	1.87	1.90	1.93	1.96	2.00	2.03	2.06	2.10	2.13	2.16	2.20	2.23	2.26	2.29		
Ø 2.50	2.33	2.36	2.40	2.43	2.47	2.50	2.53	2.57	2.60	2.64	2.67	2.70	2.74	2.77	2.81		
Ø 2.75	2.58	2.61	2.65	2.68	2.71	2.75	2.78	2.81	2.85	2.88	2.91	2.94	2.98	3.01	3.04		
Ø 3.00	2.81	2.85	2.89	2.92	2.96	3.00	3.04	3.07	3.11	3.15	3.18	3.22	3.26	3.29	3.33		
Ø 3.50	3.29	3.34	3.38	3.42	3.46	3.50	3.55	3.59	3.63	3.67	3.71	3.76	3.80	3.84	3.88		
Ø 4.00	3.75	3.80	3.85	3.90	3.95	4.00	4.06	4.11	4.16	4.21	4.26	4.31	4.36	4.41	4.46		

TECHNICAL SPECIFICATIONS

Stent Material	Cobalt Chromium Alloy (L605)
Stent Surface	Microporous Surface
Coating	Abuminal Coating
Strut Thickness	Small Vessel 68 micron, Medium Vessel 79 micron
Polymer	Biodegradable Polymer (Resomer R202S)
Drug	Sirolimus Drug
Proximal Shaft	>0.65 mm (1.9F)
Distal Shaft	> 0.88 mm (2.70F)

Usable Length	143± 5cm
Guiding catheter compatibility	5 F Guiding catheter
Guide wire compatibility	0.014" PTFE guide wire
Nominal Pressure (NP)	11 bars
Rated Burst Pressure (RBP)	16 bars
Crossing Profile	0.85 ~ 1.10 mm
Tip entry profile	0.41 mm

 1434

Manufactured By:
Translumina Therapeutics LLP
 Plot No. #12, Pharmacity, Selaqui, Dehradun-248011
 Uttarakhand India
 Manufacturing License No. MFG/MD/2019/000227

Registered Office:
Translumina Therapeutics LLP
 Ground Floor, Metro Tower, LSC MOR Land,
 New Rajinder Nagar, New Delhi 110 060 - India

Under Technological Collaboration With:
Translumina GmbH
 Neue Rottenburger Strasse 50,
 D-72379 Hechingen, Germany

EC	REP
----	-----

CMC Medical Devices & Drugs S.L.
 C/Horacio Lengo N°18
 C.P 29006 Málaga-Spain
 +34 951 214 054 (Spain)
info@cmcmedicaldevices.com, www.cmcmedicaldevices.com

Customer Care No.: 011-28742874
 Email: info@translumina.in
 Visit www.translumina.in for more details.

Please refer to the **Instructions for Use** supplied with these devices for indications, contraindications, adverse events, suggested procedures, warnings and precautions.

translumina
 LIMITLESS POSSIBILITIES